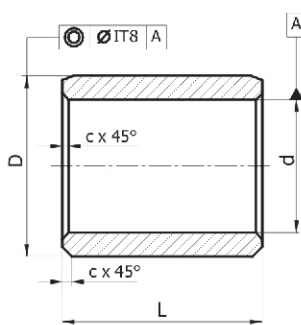


B 60

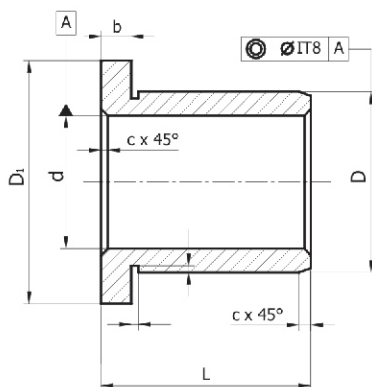
BRONZE TURNED BEARINGS

ODSTREDIVO LIATE, SÚSTRUŽENÉ KLZNÉ LOŽISKÁ

Typ A



Typ B



Unit:mm

| d F7 | D r7 rada 1 | D ₁ , d ₁₁ | L rada 1 | L rada 2 | b | c |
|------|----------------|----------------------------------|-------------|-------------|------|-----|
| 10 | 14 | 20 | 6 | 10 | | |
| 15 | 20 | 27 | 10 | 15 | | |
| 20 | 25 | 32 | 15 | 20 | 3.0 | 1.0 |
| 25 | 30 | 38 | 20 | 30 | | |
| 30 | 35 | 44 | 20 | 30 | 4.0 | |
| 35 | 40 | 50 | 30 | 40 | | |
| 40 | 45 | 58 | 30 | 40 | | 1.5 |
| 45 | 50 | 63 | 30 | 40 | 5.0 | |
| 50 | 60 | 68 | 40 | 50 | | |
| 55 | 65 | 73 | 40 | 50 | | |
| 60 | 70 | 83 | 40 | 60 | | |
| 65 | 75 | 88 | 50 | 60 | | |
| 70 | 80 | 95 | 50 | 70 | 7.5 | |
| 75 | 85 | 100 | 50 | 70 | | 2.0 |
| 80 | 90 | 105 | 60 | 80 | | |
| 85 | 95 | 110 | 60 | 80 | | |
| 90 | 105 | 120 | 60 | 80 | | |
| 95 | 110 | 125 | 60 | 100 | | |
| 100 | 115 | 130 | 80 | 100 | 10.0 | |
| 110 | 130 | 150 | 100 | 120 | | |
| 120 | 140 | 160 | 100 | 120 | | |
| 130 | 150 | 170 | 100 | 120 | | |
| 140 | 160 | 180 | 120 | 150 | 15.0 | |
| 150 | 170 | 190 | 120 | 150 | | |
| 180 | 200 | 220 | 120 | 150 | | 2.5 |
| 200 | 220 | 240 | 150 | 200 | | |
| 220 | 250 | 270 | 150 | 200 | 20.0 | |
| 250 | 300 | 320 | 150 | 200 | | |
| 300 | 350 | 350 | 150 | 250 | | |

Order example: B60M1 - 5040 A

označovanie

material

typ
length L
diameter d

| Tech. Data | | | | | | | | |
|------------------------------------|----|-------|-------|-------|-------|-------|-------|-------|
| Material | | 60 M1 | 60 M2 | 60 M3 | 60 M4 | 60 M5 | 60 M6 | 60 M7 |
| Composition % | Cu | 65 | 85 | 80 | 88 | 80 | 65 | 76 |
| | Sn | | 5 | | 12 | 10 | | 8 |
| | Pb | | 5 | | | 10 | | 15 |
| | Zn | 25 | 5 | | | | 25 | |
| | Ni | | | 5 | | | | 1 |
| | Al | 6 | | 10 | | | 6 | |
| | Fe | | | 5 | | | | |
| | Mn | 4 | | | | | 4 | |
| Density | | 8.0 | 8.8 | 7.6 | 8.8 | 8.9 | 8.0 | 9.1 |
| Yield point N/mm ² | | >350 | >90 | >260 | >150 | >100 | >450 | >80 |
| Tensile strength N/mm ² | | >750 | >250 | >500 | >270 | >210 | >800 | >180 |
| Elongation % | | >12 | >15 | >10 | >5 | >8 | >8 | >8 |
| Hardness HB | | >210 | >70 | >150 | >95 | >75 | >250 | >60 |
| Limit temp. °C | | 300 | 400 | 400 | 400 | 250 | 400 | 250 |

Solid Lubricants

| Lubricant | Features | Typical application |
|---------------------|--|---|
| SL1 Graphite+add | Excellent resistance against chemical attacks and low friction. Temp limit 400°C | Suite for general machines and under atmosphere |