

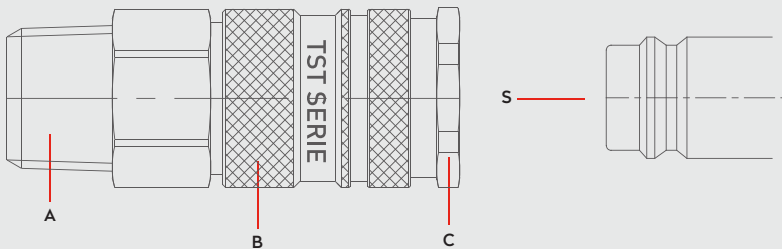


PNEUMATIC COUPLINGS
PNEUMATISCHE KUPPLUNGEN

SERIE 027B



Materials



Material Code

- A = Brass Nickel Plated
- B = Steel Nickel Plated
- C = Brass Nickel Plated
- S = Brass Nickel Plated



0 - 35 bar
(0-508 PSI)



-20° to + 100°C (NBR)
-4° to + 212°F

Shut Off Type



OM 300 - 00700
OM 300 - 01000
OM 100 - 01600

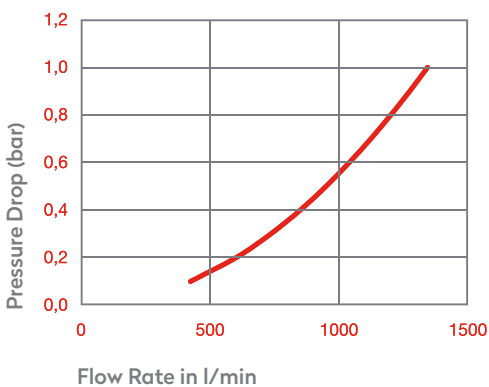
FLOW

900 lt/min

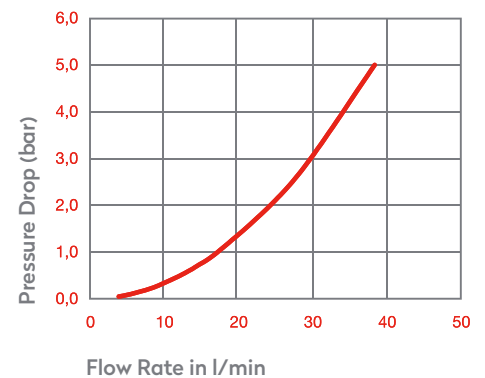
DN

10 mm

Air



Water



Options

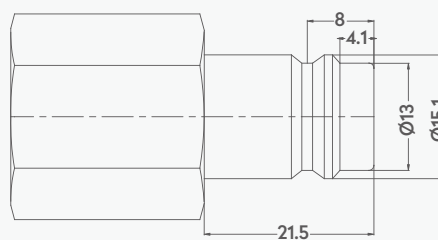
FPM

EPDM

AISI303
Stainless Steel

AISI316
Stainless Steel

Plug Profile Serie 027B

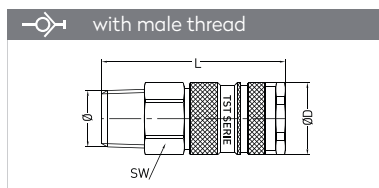


Compatible with

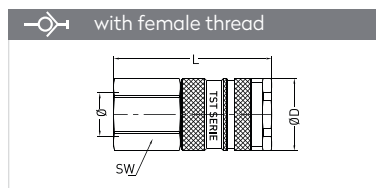
PARKER - RECTUS 27KB



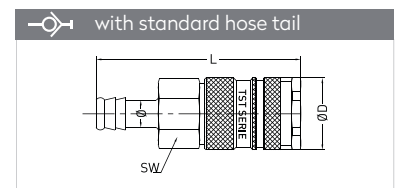
QUICK COUPLINGS SCHNELLKUPPLUNGEN



Connection	Part No.	SW	L	ØD
BSPT 1/4"	027 RGB 13	24	64,5	27
BSPT 3/8"	027 RGB 17	24	64,5	27
BSPT 1/2"	027 RGB 21	24	64,5	27
BSPT 3/4"	027 RGB 26	27	64,5	27
BSP 1/4"	027 EGB 13	24	65	27
BSP 3/8"	027 EGB 17	24	65	27
BSP 1/2"	027 EGB 21	24	66,5	27
BSP 3/4"	027 EGB 26	30	68,5	27

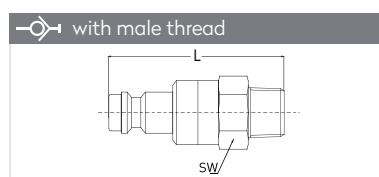


Connection	Part No.	SW	L	ØD
BSP 1/4"	027 DGB 13	24	58,5	27
BSP 3/8"	027 DGB 17	24	58,5	27
BSP 1/2"	027 DGB 21	24	61,5	27
BSP 3/4"	027 DGB 26	30	65,5	27

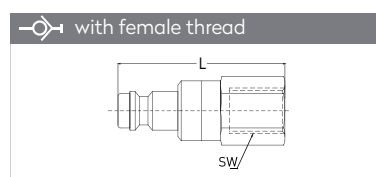


Connection	Part No.	SW	L	ØD
6 mm - 1/4"	027 HGB 06	24	74,5	27
8 mm - 5/16"	027 HGB 08	24	74,5	27
9 mm - 5/14"	027 HGB 09	24	74,5	27
10 mm - 3/8"	027 HGB 10	24	74,5	27
13 mm - 1/2"	027 HGB 13	24	74,5	27
16 mm - 5/8"	027 HGB 16	24	74,5	27
19 mm - 3/4"	027 HGB 19	24	74,5	27

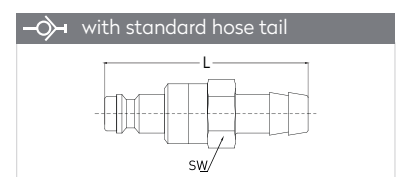
PLUGS STECKNIPPEL



Connection	Part No.	SW	L
BSPT 1/4"	027 RUB 13	24	63,5
BSPT 3/8"	027 RUB 17	24	63,5
BSPT 1/2"	027 RUB 21	24	63,5
BSPT 3/4"	027 RUB 26	27	63,5
BSP 1/4"	027 EUB 13	24	64
BSP 3/8"	027 EUB 17	24	64
BSP 1/2"	027 EUB 21	24	65,5
BSP 3/4"	027 EUB 26	30	67,5



Connection	Part No.	SW	L
BSP 1/4"	027 DUB 13	24	57,5
BSP 3/8"	027 DUB 17	24	57,5
BSP 1/2"	027 DUB 21	24	60,5
BSP 3/4"	027 DUB 26	30	64,5



Connection	Part No.	SW	L
6 mm - 1/4"	027 HUB 06	24	73,5
8 mm - 5/16"	027 HUB 08	24	73,5
9 mm - 5/14"	027 HUB 09	24	73,5
10 mm - 3/8"	027 HUB 10	24	73,5
13 mm - 1/2"	027 HUB 13	24	73,5
16 mm - 5/8"	027 HUB 16	24	73,5
19 mm - 3/4"	027 HUB 19	24	73,5