

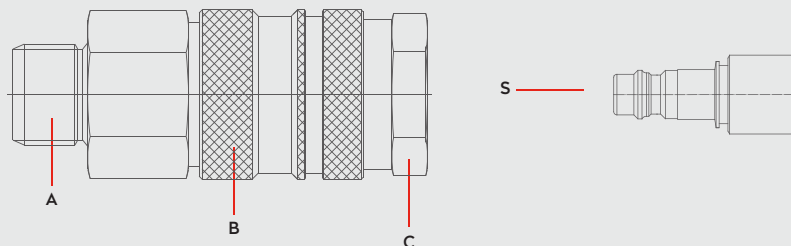


PNEUMATIC COUPLINGS
PNEUMATISCHE KUPPLUNGEN

SERIE 092D SAFETY LOCK



Materials



Material Code

A = Brass Nickel Plated

B = Brass Nickel Plated

C = Brass Nickel Plated

S = Brass Nickel Plated



0 - 35 bar
(0-508 PSI)



-20° to + 100°C (NBR)
-4° to + 212°F

Shut Off
Type



OM 157 - 00700
OM 100 - 01000
OM 300 - 00750

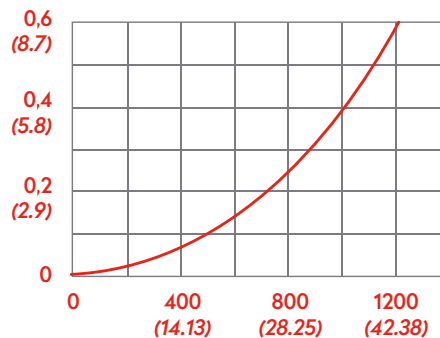
FLOW

1100 lt/min

DN

6 mm

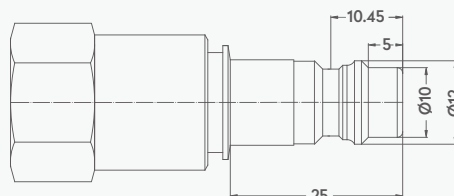
Air Flow
Pressure drop bar (PSI)



Flow CFM (l/min)

Options

Plug Profile Serie 092



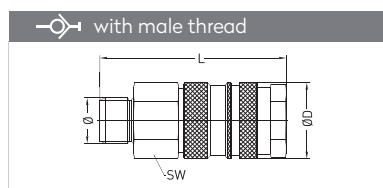
Compatible with

CEJN

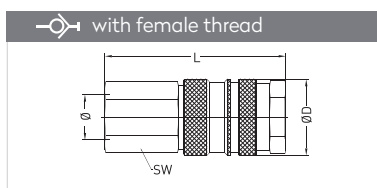
347



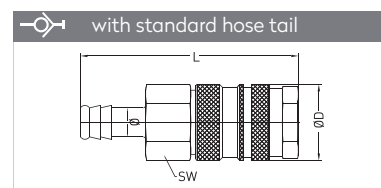
QUICK COUPLINGS SCHNELLKUPPLUNGEN



Connection	Part No.	SW	L	ØD
BSP 1/8"	092 EGD 10	19	57,8	23
BSP 1/4"	092 EGD 13	19	59,8	23
BSP 3/8"	092 EGD 17	19	59,8	23

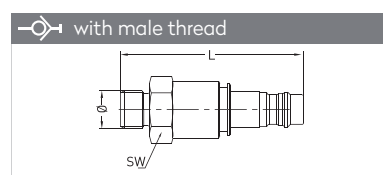


Connection	Part No.	SW	L	ØD
BSP 1/4"	092 DGD 13	19	57,8	23
BSP 3/8"	092 DGD 17	19	57,8	23
BSP 1/2"	092 DGD 21	24	59,8	23

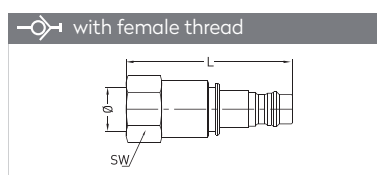


Connection	Part No.	SW	L	ØD
6 mm - 1/4"	092 HGD 06	19	73,8	23
8 mm - 5/16"	092 HGD 08	19	73,8	23
10 mm - 3/8"	092 HGD 10	19	73,8	23
13 mm - 1/2"	092 HGD 13	19	73,8	23

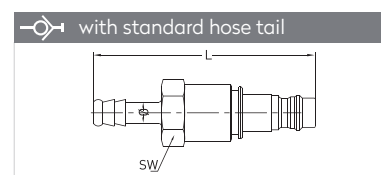
PLUGS STECKNIPPEL



Connection	Part No.	SW	L	ØD
BSP 1/8"	092 EUD 10	20	60,9	23
BSP 1/4"	092 EUD 13	20	62,9	23
BSP 3/8"	092 EUD 17	20	63,9	23



Connection	Part No.	SW	L	ØD
BSP 1/8"	092 DUD 10	20	56,9	23
BSP 1/4"	092 DUD 13	20	56,9	23
BSP 3/8"	092 DUD 17	20	59,9	23



Connection	Part No.	SW	L	ØD
6 mm - 1/4"	092 HUD 06	20	73,9	23
8 mm - 5/16"	092 HUD 08	20	73,9	23
10 mm - 3/8"	092 HUD 10	20	73,9	23
13 mm - 1/2"	092 HUD 13	20	73,9	23